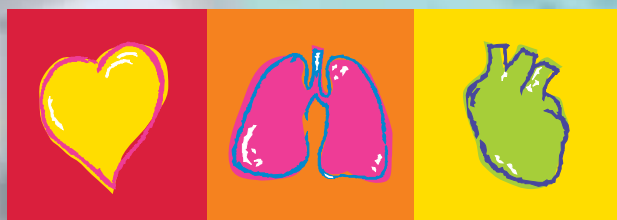


ECG & SPIRO ACCESSORIES

For optimum results.











SCHILLER

www.schiller.ch

The Art of Diagnostics

TABLE OF CONTENTS

ELECTROCARDIOGRAPHS		3
Thermal Paper		4
Bags & Cases Clips & Adapters		5
Electrodes		6
ECG Patient Cables		7
Accessories for Exercise Testing Holter Accessories		8
Trolleys		9
SPIROMETERS		10
Disposable Mouthpieces Replacement Filters		10/11
Nose Clips & Adapters Calibration Pumps		12

ELECTROCARDIOGRAPHS

Protect your ECG investment! Use only **SCHILLER** approved accessories and supplies to guarantee test accuracy, print quality and product performance. **SCHILLER** offers a broad line of ECG supplies including electrodes, adapters and clips, patient cables, thermal paper and accessory kits.

SCHILLER is an ISO certified manufacturer, and our products meet applicable FDA requirements for medical devices. Our electrodes have been rigorously tested for conductivity, adhesion and hyper-allergenic qualities, and exceed all AAMI standards. Our cables and wires are manufactured according to the highest standards, meeting or exceeding ANSI/AAMI EC53-1995 and IEC601.

SCHILLER thermal paper is of excellent quality and designed for long-term archiving of ECG and Spirometry recordings. Proper handling guarantees full chart integrity for many years. Each item in this catalog is designed to provide you with the utmost quality. Choose

SCHILLER supplies for optimum results and superior value!

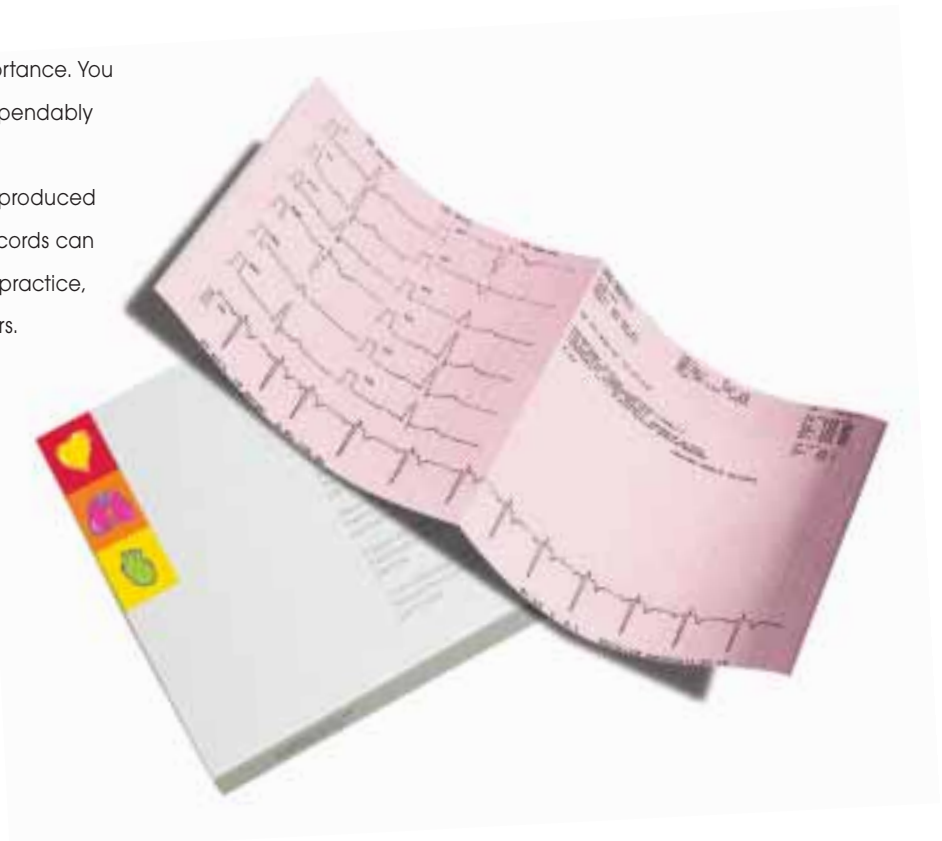


ELECTROCARDIOGRAPHS

THERMAL PAPER

Reliability of patient charting is of paramount importance. You can be sure that our recording paper will work dependably and provides superior print quality.

Clear and legible ECG and Spirometry traces are produced on high quality, medical grade thermal paper. Records can be mounted, filed and stored. Under normal filing practice, images will remain legible for a minimum of 5 years.



PART #	DESCRIPTION	UNIT	USE WITH
2.157012	Paper, 210 mm wide/22 m long	1	AT-10, SP-10
2.157012P	Paper, same as above, but 1 pallet	1000/pallet	AT-10, SP-10
2.157013	Paper, 135 mm wide/15 m long	1	AT-5
2.157013P	Paper, same as above, but 1 pallet	2500/pallet	AT-5
2.157014	Paper, 89 mm wide/26 m long	1	AT-1, AT-1 smartprint, SP-1
2.157014P	Paper, same as above, but 1 pallet	2500/pallet	AT-1, AT-1 smartprint, SP-1
2.157016	Paper, 90 mm wide/16 m long	1	AT-4, AT-4 Tele, AT-104 PC
2.157016P	Paper, same as above, but 1 pallet	4000/pallet	AT-4, AT-4 Tele, AT-104 PC
2.157017	Paper, 210 mm wide/50 m long	1	AT-2, AT-2 plus, CS-200
2.157017P	Paper, same as above, but 1 pallet	500/pallet	AT-2, AT-2 plus, CS-200
2.157022	Paper, 210 mm wide/20 m long	1	PT-160
2.157022P	Paper, same as above, but 1 pallet	1000/pallet	PT-160
2.157023	Paper, 210 mm wide/22 m long	1	AT-110, AT-10 plus
2.157022P	Paper, same as above, but 1 pallet	1200/pallet	AT-110, AT-10 plus
2.157025	Paper, 210 mm wide/40 m long	1	AT-102
2.157025P	Paper, same as above, but 1 pallet	840/pallet	AT-102
2.157026	Paper, 80 mm wide/22 m long	1	AT-101, LCM, DEFIGARD 6002
2.157026P	Paper, same as above, but 1 pallet	2500/pallet	AT-101, LCM, DEFIGARD 6002

ELECTROCARDIOGRAPHS

BAGS & CASES

PART #	DESCRIPTION	UNIT	USE WITH
2.156013	Carrying bag	1	AT-1
2.156018	Carrying case	1	AT-10, SP-10
2.156021	Carrying case	1	AT-5
2.156001	Carrying case	1	AT-4



Part # 2.155032

CLIPS & ADAPTERS

PART #	DESCRIPTION	UNIT	USE WITH
2.000035	Patient cable/analogue output adapter set, for patient cable connection and analogue transmission, includes 1 analogue output adapter, 1 analogue output box, 1 DC connection cable to CARDIOVIT ECG	1	MS-3
2.000036	RS-232 adapter set, for PC data transmission and printout, includes 1 adapter RS-232 and 1 PC Software MS-3 (works on Windows 95, 98 and NT)	1	MS-3
2.155030	Cardio preps	50/set	AT-1, AT-101, AT-1 smartprint, AT-2, AT-2 plus, AT-4, PT-160, CS-200, AT-102, AT-110, AT-10 plus
2.155032	Snap-clip adapter for use with SCHILLER Tabs Ag electrodes	10/pouch	AT-1, AT-101, AT-1 smartprint, AT-2, AT-2 plus, AT-4, PT-160, CS-200, AT-102, AT-110, AT-10 plus
2.410041	Adapter for snap-on fastener for SCHILLER ECG patient cables with banana plug	10/set	AT-1, AT-101, AT-1 smartprint, AT-2, AT-2 plus, AT-4, AT-5, AT-10, PT-160, CS-200, AT-102, AT-110

ELECTRODES



Part # 2.155031



Part # 2.155025

You can expect stable and artefact-free tracings with the convenience of our high-quality electrodes. Low impedance allows strong signal transmission for clear, sharp readings. Our electrode gel guarantees an accurate trace and excellent adhesion, leaving no residue on the patient's skin. An aggressive and hypo-allergenic adhesive eliminates the need for repeated tests – and it is **latex free!**

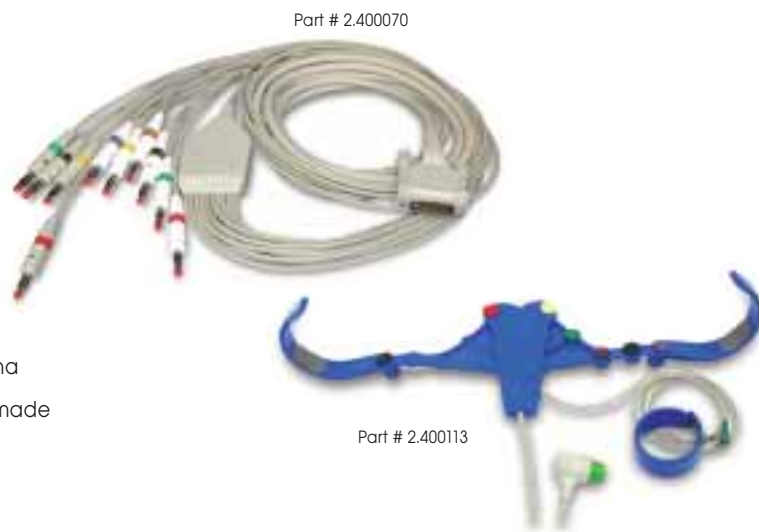
PART #	DESCRIPTION	UNIT	USE WITH
2.000041	Reusable electrode set, including 4 extremity electrodes, 6 suction electrodes and 1 electrode gel	1	AT-1, AT-101, AT-2, AT-2 plus, AT-5, AT-10, CS-200, PT-160, AT-1 smartprint, AT-110, AT-102, AT-10 plus
2.000052	Reusable electrode set for children, including 4 extremity electrodes, 6 suction electrodes and 1 electrode gel	1	AT-1, AT-101, AT-2, AT-2 plus, AT-5, AT-10, CS-200, PT-160, AT-1 smartprint, AT-110, AT-102, AT-10 plus
2.155025	Blue Sensor Stress Test electrodes, disposable	25/set	AT-102, CS-200, AT-10, AT-10 plus, AT-104 PC, AT-110, PT-160
2.155031	Disposable bio-adhesive electrodes SCHILLER-Tabs Ag	500/box	AT-1, AT-101, AT-2, AT-2 plus, AT-4, PT-160, AT-1 smart-print, CS-200, AT-110, AT-102, AT-10 plus
2.155054	Blue Sensor Holter electrode, type VL, microporous backing, Ag/AgCl sensor, 68 mm Ø	30/set	MT-100, MT-101



ELECTROCARDIOGRAPHS

ECG PATIENT CABLES

Our patient cables and lead systems are latex free!
 100% shielding eliminates noise from cable motion.
 Colour coding with lead designations provides quick
 and easy lead referencing. Two-lead wire termination
 options provide multiple adapter choices for attachment
 to electrodes. You can perform ECG and stress testing with
 one cable by using different lead wires or adapters with banana
 plug lead wires. Most of our patient cables are designed and made
 to withstand defibrillation voltage.



PART #	DESCRIPTION	UNIT	USE WITH
2.400118	10-lead patient cable, IEC 3.5 m, with non-detachable leads, banana plug	1	AT-10, CS-200
2.400115	10-lead patient cable, IEC 3.5 m, with non-detachable leads, clip	1	AT-10, CS-200
2.400119	10-lead patient cable, USA 3.5 m, with non-detachable leads, banana plug	1	AT-10, CS-200
2.400116	10-lead patient cable, USA 3.5 m, with non-detachable leads, clip	1	AT-10, CS-200
2.400057	5-lead patient cable, IEC, with 4 mm banana plugs	1	MS-3
2.400058	3-lead patient cable, IEC, with 4 mm banana plugs	1	MS-3
2.400059	5-lead patient cable, IEC, clip	1	MS-3
2.400060	3-lead patient cable, IEC, clip	1	MS-3
2.400061	5-lead patient cable USA/AHA, clip	1	MS-3
2.400070	10-lead patient cable, IEC 2 m, with banana plugs	1	AT-1, AT-101, AT-1 smartprint, AT-2, AT-2 plus, AT-4, AT-104 PC, PT-160, AT-102, AT-110
2.400079	10-lead patient cable, IEC, 2 m, with clip	1	AT-1, AT-101, AT-1 smartprint, AT-2, AT-2 plus, AT-4, AT-104 PC, PT-160, AT-102, AT-110
2.400095	10-lead patient cable, IEC, 3.5 m, with clip	1	AT-1, AT-101, AT-1 smartprint, AT-2, AT-2 plus, AT-4, AT-104 PC, PT-160, AT-102, AT-110
2.400071	10-lead patient cable, USA 2 m, with banana plugs	1	AT-1, AT-101, AT-1 smartprint, AT-2, AT-2 plus, AT-4, AT-104 PC, PT-160, AT-102, AT-110
2.400104	10-lead patient cable, USA, 3.5 m, with clip	1	AT-1, AT-101, AT-1 smartprint, AT-2, AT-2 plus, AT-4, AT-104 PC, PT-160, AT-102, AT-110
2.400090	10-lead patient cable, IEC 2 m, with push-button	1	AT-4 Tele
2.400113	ECG electrode belt, IEC, for Resting ECGs (incl. bag, ECG spray and left foot electrode)	1	AT-1, AT-101, AT-1 smartprint, AT-2, AT-2 plus, AT-4, AT-104 PC, PT-160, AT-102, AT-110, AT-10 plus
2.158008	ECG electrode spray, 250 ml	1	
2.158003	Left foot electrode for ECG belt	1	

ACCESSORIES FOR EXERCISE TESTING

PART #	DESCRIPTION	UNIT	USE WITH
2.100060	Ergobelt	1	AT-10, AT-104 PC, CS-200, PT-160, AT-102, AT-110, AT-10 plus
2.400095	10-lead exercise test patient cable, IEC, 3.5 m, with clip	1	AT-104 PC, PT-160, AT-102, AT-110, AT-10 plus
2.400115	10-lead patient cable, IEC, 3.5 m, with non-detachable leads, clip	1	AT-10, CS-200
2.400104	10-lead exercise test patient cable, USA, 3.5 m, with clip	1	AT-104 PC, PT-160, AT-102, AT-110, AT-10 plus
2.400116	10-lead patient cable, USA, 3.5 m, with non-detachable leads, clip	1	AT-10, CS-200



Part # 2.100060



Part # 2.400115



Part # 2.100534

HOLTER ACCESSORIES

PART #	DESCRIPTION	UNIT	USE WITH
2.100534	Holter Hook-up Kit, includes 2 alcohol prep pads, 1 surgical prep razor, 12 pre-gelled electrodes, 1 abrasive pad	1	MT-100, MT-101
4.350000	AA Battery 1.5 V Alkaline	1	MT-100, MT-101
2.310215	USB cable	1	MT-101
2.400103	4-lead patient cable, IEC-colour code, 2-channel version	1	MT-101
2.400102	6-lead patient cable, IEC-colour code, 2-channel version	1	MT-101
2.400101	4-lead patient cable, USA-colour code, 2-channel version	1	MT-101
2.400100	6-lead patient cable, USA-colour code, 2-channel version	1	MT-101
2.156035	Reusable Neopren carrying pouch incl. belt	1	MT-101
2.155054	Blue Sensor Holter electrode, type VL, microporous backing, Ag/AgCl sensor, 68 mm Ø, set of 25	1	MT-100, MT-101
2.400111	5-lead patient cable, new type, 2-channel version	1	MT-100
2.400112	7-lead patient cable, IEC-colour code, 2-channel version	1	MT-100
2.156025	Reusable carrying pouch	1	MT-100
2.156029	Replacement belt for reusable carrying pouch	1	MT-100
2.100107	Opto transmission cable to PC, 4 m	1	MT-100
2.100111	Opto transmission cable to PC, 10 m	1	MT-100

TROLLEYS

PART #	DESCRIPTION	UNIT	USE WITH
2.100172	ITD trolley CLASSIC without cable arm, incl. shelf and basket	1	AT-2, AT-2 plus, AT-10, AT-102, AT-110
2.100177	ITD trolley UNICART 1 without cable arm, incl. basket	1	AT-1, AT-1 smartprint, AT-101
2.100180	ITD trolley UNICART 2 without cable arm, incl. basket and drawer	1	AT-1, AT-1 smartprint, AT-101
2.100179	Shelf for ITD trolley CLASSIC	1	
2.100178	Shelf for ITD trolley UNICART	1	
2.100134	Cable arm for ITD trolley CLASSIC and UNICART	1	
2.100176	Monitor holder for ITD trolley CLASSIC	1	
2.100075	ECG trolley incl. cable arm	1	AT-5, AT-10
2.100170	ECG trolley with monitor holding device	1	AT-104
2.100171	ECG trolley with monitor holding device and suction pump	1	AT-104



Part # 2.100172 CLASSIC trolley incl. cable arm (Part # 2.100134) and monitor holder (Part # 2.100176)



Part # 2.100177 UNICART 1



Part # 2.100180 UNICART 2 trolley incl. cable arm (Part # 2.100134)

SPIROMETERS

SPIROMETERS

Protect your Spirometry investment! Use only **SCHILLER** approved accessories and supplies to guarantee test accuracy, print quality and product performance. **SCHILLER** offers a broad line of Spirometry supplies including flow tubes and mouthpieces, thermal paper, sensors, nose clip/adapters and calibration pumps.

SCHILLER carries both durable and disposable flow tubes. Our sensors meet all requirements for ATS, OSHA and NIOSH standards. Our cables and wires are manufactured according to the highest standards, meeting or exceeding ANSI/AAMI EC53-1995 and IEC601. Because our unique sensors are disposable and for single-patient-use, they eliminate sterilization concerns, save time and guarantee accurate measurements. Our thermal paper is especially designed for long-term archiving of Spirometry recordings. Each spirometry accessory is designed to provide you with the utmost quality. Choose **SCHILLER** supplies for optimum results and superior value!

THERMAL PAPER

Thermal paper for Spirometry, please see on page 4 under ECG



DISPOSABLE MOUTHPIECES

Our durable, plastic coated, white paper mouthpieces are designed for sanitary, single-patient-use. The plastic coating prevents adhesion of oral tissue to the mouthpiece, which is especially important for older patients with dry or tender oral tissue.

SCHILLER's disposable flow tubes ensure patient safety by limiting cross-contamination and save valuable professional time and repair costs. Our sensors may be used for pediatric patients and adults. They are calibrated and tested for accuracy.



DISPOSABLE MOUTHPIECES



SP-250, SP-260



SP-2



SP-20, SP-150

PART #	DESCRIPTION	UNIT	USE WITH
2.100118	Mouthpieces (plastic)	10/set	SP-2
2.100024	Mouthpieces (cardboard)	100/set	SP-110/SP-110/R
2.100025	Mouthpieces (cardboard)	100/set	SP-20, SP-260
2.100077	Mouthpieces (plastic)	10/set	SP-150, SP-250



REPLACEMENT FILTERS

PART #	DESCRIPTION	UNIT	USE WITH
2.100026	Replacement filters	10/set	SP-110/SP-110/R
2.100123	Replacement filters	100/set	SP-20, SP-260

SPIROMETERS

NOSE CLIPS & ADAPTERS

Our plastic nose clip is comfortably held in place by spring action. The soft nose pads provide a gentle no-slip grip, ensuring a proper fit.



PART #	DESCRIPTION	UNIT	USE WITH
2.100084	Nose clip	1	SP-1, SP-2, SP-10, PC Spiro
4.430181	Adapter for calibration pump	1	SP-20, SP-260

CALIBRATION PUMPS

The **SCHILLER** Calibration pump is an airtight, 2 liter calibrated pump providing a known, standard volume against which to periodically check the volume measurements of your spirometer. Both the American Thoracic Society and the European Respiratory Society state that a spirometer must be checked daily using a calibrated pump with a volume of at least 2 litres, to guarantee its accuracy of volume measurement.



Part # 2.100027

PART #	DESCRIPTION	UNIT	USE WITH
2.100027	Calibration pump (2 litres)	1	SP-2, SP-110, SP-110/R, SP-20, SP-150, SP-250, SP-260

ORDER FORM

Yes - I would like to order the following **SCHILLER** products.

Part #	Description	Unit	Amount
ELECTROCARDIOGRAPHS			
Paper:			
2.157012	Paper, 210 mm wide/22 m long	1	
2.157012P	Paper, same as above, but 1 pallet	1000/pallet	
2.157013	Paper, 135 mm wide/15 m long	1	
2.157013P	Paper, same as above, but 1 pallet	2500/pallet	
2.157014	Paper, 89 mm wide/26 m long	1	
2.157014P	Paper, same as above, but 1 pallet	2500/pallet	
2.157016	Paper, 90 mm wide/16 m long	1	
2.157016P	Paper, same as above, but 1 pallet	4000/pallet	
2.157017	Paper, 210 mm wide/50 m long	1	
2.157017P	Paper, same as above, but 1 pallet	500/pallet	
2.157022	Paper, 210 mm wide/20 m long	1	
2.157022P	Paper, same as above, but 1 pallet	1000/pallet	
2.157023	Paper, 210 mm wide/22 m long	1	
2.157022P	Paper, same as above, but 1 pallet	1200/pallet	
2.157025	Paper, 210 mm wide/40 m long	1	
2.157025P	Paper, same as above, but 1 pallet	840/pallet	
2.157026	Paper, 80 mm wide/22 m long	1	
2.157026P	Paper, same as above, but 1 pallet	2500/pallet	
Bags & Cases:			
2.156001	Carrying bag AT-4	1	
2.156013	Carrying bag AT-1	1	
2.156018	Carrying case AT-10, SP-10	1	
2.156021	Carrying case AT-5	1	
Clips & Adapters:			
2.000035	Patient cable/analogue output adapter set, for patient cable connection and analogue transmission, includes 1 analogue output adapter, 1 analogue output box, 1 DC connection cable to CARDIOVIT ECG	1	
2.000036	RS-232 adapter set, for PC data transmission and printout, includes 1 adapter RS-232 and 1 PC Software MS-3 (works on Windows 95, 98 and NT)	1	
2.155030	Cardio preps	50/set	
2.155032	Snap-clip adapter for use with SCHILLER Tabs Ag electrodes	10/pouch	
2.410041	Adapter for snap-on fastener for SCHILLER ECG patient cables with banana plug	10/set	
Electrodes:			
2.000041	Electrode set, including 4 extremity electrodes, 6 suction electrodes and 1 electrode gel	1	
2.000052	Electrode set for children, including 4 extremity electrodes, 6 suction electrodes and 1 electrode gel	1	
2.155025	Blue Sensor Stress Test electrodes, disposable	25/set	
2.155031	Bio-adhesive electrodes SCHILLER-Tabs Ag	500/set	
2.155054	Blue Sensor Holter electrode, Type VL, microporous backing, Ag/AgCl sensor, 68 mm Ø	30/set	

Please use the "Answer Fax" to send this order form to the **SCHILLER** distributor near you, or call us directly:

ORDER FORM

Yes - I would like to order the following **SCHILLER** products.

Part #	Description	Unit	Amount
ELECTROCARDIOGRAPHS			
ECG Patient Cables:			
2.400118	10-lead patient cable, IEC 3.5 m, with non-detachable leads, banana plug	1	
2.400119	10-lead patient cable, USA 3.5 m, with non-detachable leads, banana plug	1	
2.400115	10-lead patient cable, IEC 3.5 m, with non-detachable leads, clip	1	
2.400116	10-lead patient cable, USA 3.5 m, with non-detachable leads, clip	1	
2.400057	5-lead patient cable, IEC, with 4 mm banana plugs	1	
2.400058	3-lead patient cable, IEC, with 4 mm banana plugs	1	
2.400059	5-lead patient cable, IEC, clip	1	
2.400060	3-lead patient cable, IEC, clip	1	
2.400061	5-lead patient cable, USA/AHA, clip	1	
2.400070	10-lead patient cable, IEC 2 m, with banana plugs	1	
2.400071	10-lead patient cable, USA 2 m, with banana plugs	1	
2.400079	10-lead patient cable, IEC, 2 m, with clip	1	
2.400095	10-lead patient cable, IEC, 3.5 m, with clip	1	
2.400090	10-lead patient cable, IEC 2 m, with push-button	1	
2.400104	10-lead patient cable, USA, 3.5 m, with clip	1	
2.400113	ECG electrode belt, IEC, for Resting ECGs (incl. bag, ECG spray and left foot electrode)	1	
2.158008	ECG electrode spray, 250 ml	1	
2.158003	Left foot electrode for ECG belt	1	
Accessories for Exercise Testing:			
2.100060	Ergobelt	1	
2.400095	10-lead exercise test patient cable, IEC, 3.5 m, with clip	1	
2.400115	10-lead patient cable, IEC, 3.5 m, with non-detachable leads, clip	1	
2.400104	10-lead exercise test patient cable, USA, 3.5 m, with clip	1	
2.400116	10-lead patient cable, USA, 3.5 m, with non-detachable leads, clip	1	
Holter Accessories:			
2.100534	Holter Hook-up Kit, includes 2 alcohol prep pads, 1 surgical prep razor, 12 pre-gelled electrodes, 1 abrasive pad	1	
4.350000	AA Battery 1.5 V Alkaline	1	
2.310215	USB cable	1	
2.400103	4-lead patient cable, IEC-colour code, 2-channel version	1	
2.400102	6-lead patient cable, IEC-colour code, 2-channel version	1	
2.400101	4-lead patient cable, USA-colour code, 2-channel version	1	
2.400100	6-lead patient cable, USA-colour code, 2-channel version	1	
2.156035	Reusable Neopren carrying pouch incl. belt	1	
2.155054	Blue Sensor Holter electrode, type VL, microporous backing, Ag/AgCl sensor, 68 mm Ø, set of 25	1	
2.400111	5-lead patient cable, new type, 2-channel version	1	
2.400112	7-lead patient cable, IEC-colour code, 2-channel version	1	
2.156025	Reusable carrying pouch	1	
2.156029	Replacement belt for reusable carrying pouch	1	
2.100107	Opto transmission cable to PC, 4 m	1	
2.100111	Opto transmission cable to PC, 10 m	1	

Please use the "Answer Fax" to send this order form to the **SCHILLER** distributor near you, or call us directly:

ORDER FORM

Yes - I would like to order the following **SCHILLER** products.

Part #	Description	Unit	Amount
ELECTROCARDIOGRAPHS			
Trolleys:			
2.100172	ITD trolley CLASSIC without cable arm, incl. shelf and basket	1	
2.100177	ITD trolley UNICART 1 without cable arm, incl. basket	1	
2.100179	Shelf for ITD trolley CLASSIC	1	
2.100178	Shelf for ITD trolley UNICART	1	
2.100134	Cable arm for ITD trolley CLASSIC and UNICART	1	
2.100176	Monitor holder for ITD trolley CLASSIC	1	
2.100075	ECG trolley incl. cable arm	1	
2.100170	ECG trolley with monitor holding device	1	
2.100171	ECG trolley with monitor holding device and suction pump	1	
SPIROMETERS			
Paper:			
2.157012	Recording paper, thermo-reactive, z-folded, 210 mm wide/22 m long	1	
2.157012P	Recording paper, same as above, but 1 pallet	1000/pallet	
2.157014	Recording paper, thermo-reactive, z-folded, 89 mm wide/26 m long	1	
2.157014P	Recording paper, same as above, but 1 pallet	2500/pallet	
Mouthpieces:			
2.100118	Mouthpieces (plastic)	10/set	
2.100024	Mouthpieces (cardboard)	100/set	
2.100025	Mouthpieces (cardboard)	100/set	
2.100077	Mouthpieces (plastic)	10/set	
Filters:			
2.100026	Replacement filters	10/set	
2.100123	Replacement filters	100/set	
Nose Clips & Adapters:			
2.100084	Nose clip	1	
4.430181	Adapter for calibration pump	1	
Calibration Pumps:			
2.100027	Calibration pump (2 litres)	1	



Please use the "Answer Fax" to send this order form to the **SCHILLER** distributor near you, or call us directly:

Answer fax

Yes, I am interested in the innovative products from SCHILLER.
Please send me more information about:

Resting ECG:

- CARDIOVIT AT-1
- CARDIOVIT AT-1 smartprint
- CARDIOVIT AT-101
- CARDIOVIT AT-2
- CARDIOVIT AT-2 plus

Exercise ECG (Multitasking Systems):

- CARDIOVIT AT-10 plus
- CardioLaptop® AT-110
- CardioLaptop® PT-160
- CARDIOVIT AT-102
- CARDIOVIT CS-200
- CARDIOVIT AT-104 PC
- CARDIOVIT AT/SP-10
- Ergometry

Spirometry:

- SPIROVIT SP-1
- SPIROVIT SP-2
- CS-200 Ergo-Spiro
- PC Spirometry

Monitoring:

- ARGUS PRO System
- PHYSIOGARD TM/CS 910
- Pulse Oximeter OX-2
- MRI Compatible Monitoring
- ARGUS LCM Monitor

Defibrillators/Monitoring:

- FRED® (First Responder External Defibrillator)
- FRED® easy
- FRED® easyport
- DEFIGARD (1002, 3002 IH, 6002)

Holter ECG MT-101/200

- Telemedicine:** MT-120/220 and AT-4 TELE
- SEMA-200 **Data Management System**
- BR-102 **Blood Pressure Recorder**
- MS-3 **Pocket ECG**
- VAC-100 **Vacuum Electrode System**
- ECG & Spiro **Accessories**

Name: _____

Hospital: _____

Position: _____

Address: _____

Phone (daytime): _____

Fax: _____

e-mail: _____



Asia
SCHILLER Asia-Pacific
10 C, Jalan SS 3/33
Taman Universiti
47300 Petaling Jaya
Selangor, Malaysia
Phone +603 78 77 5336
Fax +603 78 77 5744
sales@schiller.com.my

Austria
SCHILLER Handelsgesellschaft mbH
Kampmüllerweg 24
A-4040 Linz
Phone +43 732 70 99-0
Fax +43 732 757 000
sales@schiller.at

C.I.S. & Russia
SCHILLER AG
Moscow Representative Office
Office 414, 1-st Yamskogo Polya 15
125124 Moscow, Russia
Phone/Fax
+7 (095) 970 11 33,
+7 (095) 956 29 10
mail@schiller-ag.com
www.schiller-cis.com

France
SCHILLER Médical S.A.S.
4, rue Louis Pasteur
F-67162 Wissembourg/Cedex
Phone +33 3 88 63 36 00
Fax +33 3 88 94 12 82
info@schiller.fr

Germany
SCHILLER Medizintechnik GmbH
Rudolf-Diesel-Strasse 14
D-85521 Ottobrunn
Phone +49 89 62 99 81-0
Fax +49 89 609 50 90
info@schillermed.de

India
SCHILLER Healthcare India Pvt. Ltd.
D.C. Silk Mills Compound, 'A' Wing, 1st floor
5, Chunawala Estate, Kondivitta Lane
Andheri-Kurla Road, Andheri (E)
Mumbai - 400 059, India
Phone +91 22 826 35 20
Fax +91 22 826 35 25
schiller@vsnl.com

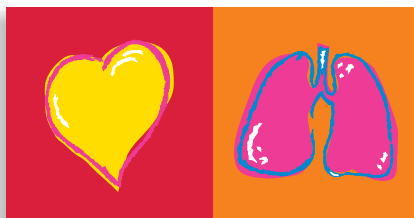
Spain
SCHILLER ESPAÑA, S.A.
Avenida Baviera, 12 - 14 Posterior
E-28028 Madrid
Phone +34 91 713 01 76
Fax +34 91 355 79 33
schiller@schiller-es.com

Switzerland
SCHILLER-Reomed AG
Riedstrasse 14
CH-8953 Dietikon
Phone +41 1 744 30 00
Fax +41 1 740 37 10
sales@schiller-reomed.ch

Turkey
SCHILLER TÜRKİYE
Halil Rifat Pasa Mah.
Darülaceze Cadd.
Perpa Ticaret Merkezi
B/Blok No: 69 K: 2
Okmeydanı-Sisli - İstanbul
Phone +90 212 210 8681 (pbx)
Fax +90 212 210 8684
sales@schiller-turkiye.com

USA
SCHILLER America Inc.
11300 NW 41st Street
Miami, Florida 33178
Phone +1 786 845 06 20
Fax +1 786 845 06 02
sales@schilleramerica.com

Answer fax



SCHILLER

www.schiller.ch

The Art of Diagnostics

Headquarters: SCHILLER AG, Altgasse 68, CH-6341 Baar, Switzerland, Phone +41 41 766 42 42, Fax +41 41 761 08 80, sales@schiller.ch



Your specialist: